

Original Investigation

National Trends in US Hospital Admissions for Hyperglycemia and Hypoglycemia Among Medicare Beneficiaries, 1999 to 2011

Kasia J. Lipska, MD, MHS; Joseph S. Ross, MD; Yun Wang, PhD; Silvio E. Inzucchi, MD; Karl Mingos, MPH; Andrew J. Karter, PhD; Elbert S. Huang, MD; Mayur M. Desai, PhD, MPH; Thomas M. Gill, MD; Harlan M. Krumholz, MD, SM

IMPORTANCE The increasing intensity of diabetes mellitus management over the past decade may have resulted in lower rates of hyperglycemic emergencies but higher rates of hospital admissions for hypoglycemia among older adults. Trends in these hospitalizations and subsequent outcomes are not known.

OBJECTIVE To characterize changes in hyperglycemia and hypoglycemia hospitalization rates and subsequent mortality and readmission rates among older adults in the United States over a 12-year period, and to compare these results according to age, sex, and race.

DESIGN, SETTING, AND PATIENTS Retrospective observational study using data from 33 952 331 Medicare fee-for-service beneficiaries 65 years or older from 1999 to 2011.

MAIN OUTCOMES AND MEASURES Hospitalization rates for hyperglycemia and hypoglycemia, 30-day and 1-year mortality rates, and 30-day readmission rates.

RESULTS A total of 279 937 patients experienced 302 095 hospitalizations for hyperglycemia, and 404 467 patients experienced 429 850 hospitalizations for hypoglycemia between 1999 and 2011. During this time, rates of admissions for hyperglycemia declined by 38.6% (from 114 to 70 admissions per 100 000 person-years), while admissions for hypoglycemia increased by 11.7% (from 94 to 105 admissions per 100 000 person-years). In analyses designed to account for changing diabetes mellitus prevalence, admissions for hyperglycemia and hypoglycemia declined by 55.2% and 9.5%, respectively. Trends were similar across age, sex, and racial subgroups, but hypoglycemia rates were 2-fold higher for older patients (≥ 75 years) when compared with younger patients (65-74 years), and admission rates for both hyperglycemia and hypoglycemia were 4-fold higher for black patients compared with white patients. The 30-day and 1-year mortality and 30-day readmission rates improved during the study period and were similar after an index hospitalization for either hyperglycemia or hypoglycemia (5.4%, 17.1%, and 15.3%, respectively, after hyperglycemia hospitalizations in 2010; 4.4%, 19.9%, and 16.3% after hypoglycemia hospitalizations).

CONCLUSIONS AND RELEVANCE Hospital admission rates for hypoglycemia now exceed those for hyperglycemia among older adults. Although admissions for hypoglycemia have declined modestly since 2007, rates among black Medicare beneficiaries and those older than 75 years remain high. Hospital admissions for severe hypoglycemia seem to pose a greater health threat than those for hyperglycemia, suggesting new opportunities for improvement in care of persons with diabetes mellitus.

JAMA Intern Med. 2014;174(7):1116-1124. doi:10.1001/jamainternmed.2014.1824
Published online May 17, 2014.

← Editor's Note page 1125

+ Supplemental content at
jamainternalmedicine.com

Author Affiliations: Author affiliations are listed at the end of this article.

Corresponding Author: Kasia J. Lipska, MD, MHS, Yale School of Medicine, Department of Internal Medicine, Section of Endocrinology, 333 Cedar St, PO Box 208020, New Haven, CT 06520-8020 (kasia.lipska@yale.edu).

Severe hypoglycemia is the most common acute adverse effect of glucose-lowering therapy among patients with diabetes mellitus (DM) and is associated with poor outcomes,¹⁻⁴ including death.⁵⁻⁸ Several recent trials have raised questions about the benefits of intensive glucose control and have demonstrated harms associated with these strategies, including severe hypoglycemia⁹⁻¹¹ and even mortality.⁹ Older patients, particularly those with multiple comorbidities, may derive less benefit from intensive strategies to lower glucose levels¹² and may be more susceptible to hypoglycemia¹³ and its consequences. Despite these concerns for older patients, DM care quality metrics established more than a decade ago have primarily focused on prevention of hyperglycemia and its complications and rewarded target-based glucose lowering to achieve a hemoglobin A_{1c} (HbA_{1c}) level below 7% of total hemoglobin^{14,15} and, more recently, below 8% of total hemoglobin.¹⁶ These efforts have been successful, and the proportion of patients with DM achieving HbA_{1c} levels below these thresholds improved significantly between 1999 and 2010.^{17,18} However, the consequences of these changes may include increased rates of hypoglycemia. (To convert HbA_{1c} to a proportion of total hemoglobin, multiply by 0.01.)

Accordingly, we sought to characterize rates of hospital admissions for hyperglycemia and hypoglycemia during the period of time when glycemic control improved, using a 100% sample of Medicare beneficiaries from 1999 to 2011. We hypothesized that the adoption of more intensive glycemic control strategies may have reduced rates of severe hyperglycemia but may have increased hypoglycemia. Because glycemic control¹⁹⁻²¹ and complications of treatment^{22,23} are known to differ among elderly individuals and black adults, we also investigated whether trends in admissions for hyperglycemia and hypoglycemia differed among patients across age, sex, and racial subgroups. Given the limited data on outcomes following hospitalization for hyperglycemia and hypoglycemia, we also evaluated changes in short- and long-term mortality and readmission rates following hospitalization to understand implications of these events for older adults.²⁴ Finally, using nationally representative survey data from the Centers for Disease Control and Prevention, we performed additional analyses to estimate rates of hospitalizations among Medicare beneficiaries with DM, because DM prevalence increased over the study period.³

Methods

Institutional review board approval was obtained through the Yale University Human Investigation Committee, and the requirement for informed consent was waived based on the nature of the study. We used inpatient National Claims History files from the Centers for Medicare and Medicaid Services (CMS) to identify all fee-for-service (FFS) Medicare beneficiaries from 1999 to 2011 and excluded beneficiaries if they were younger than 65 years or were hospitalized or resided outside of the 50 US states, the District of Columbia, and Puerto Rico.

Main Outcome Measures

To characterize relevant DM events among Medicare beneficiaries, we examined the following 5 outcome measures: hyperglycemia and hypoglycemia hospitalization rates, subsequent 30-day and 1-year mortality, and 30-day readmission rates.

Hyperglycemia and Hypoglycemia Hospitalization Rates

We defined hospitalizations for hyperglycemia and hypoglycemia as admissions to an acute care hospital for a principal discharge diagnosis of hyperglycemia or hypoglycemia based on validated methods (eTable 1 in the Supplement).²⁵ The outcomes did not include observation stays, emergency department visits, or secondary diagnoses of hyperglycemia or hypoglycemia (because they may have occurred during hospitalization or secondary to another acute event). For each year, we calculated hospitalization rates by dividing the total number of hospital admissions for hyperglycemia or hypoglycemia (numerator) by the total accumulated person-years of time (denominator). Because our intent was to describe the overall burden of these hospitalizations on the health care system, the denominator included all eligible Medicare FFS beneficiaries and was not limited to persons with DM. The use of all eligible beneficiaries also ensured that the denominator was standardized over time and was not affected by changes in the severity of diagnosed DM. To account for new enrollment, disenrollment, or death during an index year, we calculated person-years for each beneficiary. All rates are reported per 100 000 person-years.

30-Day and 1-Year Mortality Outcomes

For all patients admitted for hyperglycemia and hypoglycemia in a given year, we determined 30-day and 1-year mortality using the CMS vital status file (which included in-hospital and out-of-hospital mortality). If a patient had more than 1 admission in a given year, 1 hospitalization was selected at random. The admission date represented “time zero” for the mortality analysis. We then examined the proportion of patients who died within the 30-day and 1-year of admission.

30-Day Readmission Outcome

To generate 30-day all-cause readmission rates, we calculated the proportion of patients who were discharged alive, not transferred to another acute care hospital, and readmitted to any hospital within 30 days of discharge, consistent with the CMS publicly reported readmission measures.²⁶⁻²⁸

Sample Characteristics

We examined the following characteristics of patients admitted for hyperglycemia and hypoglycemia in each year: age (65-74, 75-84, and ≥85 years), sex, race (white, black, other), and the presence of 20 key comorbidities. We focused on comorbidities that are currently used to produce hospital risk-standardized 30-day mortality rates by the CMS for profiling hospital performance for myocardial infarction,²⁶ heart failure,²⁷ and pneumonia.²⁸ We identified these comorbidities from secondary diagnosis codes recorded at the time of discharge from hospitalization for hyperglycemia and hypo-

glycemia as well as primary or secondary diagnosis codes of all inpatient hospitalizations up to 1 year before the index hospitalization.

Statistical Analysis

To analyze whether changes over time in the primary outcomes (hyperglycemia and hypoglycemia hospitalizations, mortality and readmission rates) were statistically significant, we used the Mantel-Haenszel χ^2 test. We also used this test in prespecified demographic subgroups (age, sex, and race). To estimate the national trend in hyperglycemia and hypoglycemia hospitalization rates over time, we calculated the total number of hospitalizations and the total person-years in each state by year for 18 demographic combinations—representing 3 age categories (65-74, 75-84, and ≥ 85 years), 2 sex categories, and 3 race categories (white, black, other). We then fitted a generalized linear mixed-effects model with a Poisson link function, adjusting for age, sex, and race. The log-transformed total person-years value was used as an offset in the model to obtain the expected number of hospitalizations. Using year 1999 as the baseline year, we included 12 dummy time variables, representing subsequent years from 2000 to 2011, to assess the trend in hospitalizations over the study period. To estimate the national trend in 1-year and 30-day mortality rates over time, we fitted a linear mixed-effects model with a logit link function and state-specific random intercepts, adjusting for patient covariates from previously validated mortality models including age, sex, race, 20 comorbidities available from administrative coding, and the 12 dummy time variables. Using the baseline year as the reference year, we calculated the risk-adjusted incidence rate ratio for hospitalization and the risk-adjusted odds ratio (OR) for mortality and readmission in each subsequent year. We used the method of Zhang and Yu²⁹ to convert OR values obtained from the mixed-effects modeling to relative risk estimates. We then used the derived relative risk values to calculate risk-adjusted mortality and readmission rates for each year. For 30-day all-cause readmission rates, we constructed a Cox proportional model with state-specific random intercepts and the time variables, adjusting for patient demographics and comorbidities. To determine whether time trends varied across age, sex, and racial subgroups, we calculated interactions using time as an ordinal variable (baseline year 1999 to 2010) for hospitalization, mortality, and readmission outcomes.

All analyses were performed using SAS statistical software (version 9.3; 64-bit version; SAS Institute Inc). $P < .05$ (2-sided test) was considered statistically significant. To facilitate data presentation, patient characteristics were reported in 2-year intervals over the study period.

Additional Analyses

In calculating hospitalization rates, we did not limit our denominator to patients with a known diagnosis of DM. To estimate rates of hospitalizations among Medicare beneficiaries with DM, we used data from the Behavioral Risk Factors Surveillance System (BRFSS) to estimate the prevalence of self-reported DM among adults 65 years or older during each year. We used the BRFSS-based proportion of older adults with DM

to estimate the number of Medicare FFS beneficiaries with DM during each year and to approximate rates of admissions per 100 000 person-years with DM. Analyses for 2011 were not performed because the method for weighting changed during that year, precluding direct comparison with previous years.

Finally, to assess whether increasing prevalence of hospital observation services (not captured within the CMS inpatient data files) accompanied by a downward shift in inpatient admissions among Medicare beneficiaries³⁰ may have led to the decline in admission rates for hyperglycemia or hypoglycemia, we restricted the sample to hospitalizations with a length of stay (LOS) longer than 2 days and assessed trends in these hospitalization rates over time. Presumably, these longer hospitalizations would be less likely affected by shifts into an “observation status” designation.

Results

Sample Characteristics

The final sample consisted of 33 952 331 unique individual Medicare beneficiaries 65 years or older who contributed a total of 363 261 068 person-years of observation from 1999 to 2011. Characteristics of patients hospitalized for hyperglycemia and hypoglycemia are reported in **Table 1**.

Hyperglycemia Hospitalization Trends

There were a total of 302 095 hospitalizations for hyperglycemia contributed by 279 937 beneficiaries from 1999 to 2011. The observed rate of hospitalization for hyperglycemia declined by 38.6% during this time period, from 114 to 70 hospitalizations per 100 000 person-years (**Figure 1A**, eTable 2 in the Supplement). The decline was steepest between 1999 and 2006; subsequently, hospitalizations for hyperglycemia increased slightly from 66 hospitalizations per 100 000 person-years in 2006 to 70 hospitalizations per 100 000 person-years in 2011. In analyses adjusted for age, race, and sex, the overall incidence risk ratio (IRR) for hyperglycemia was 0.62 (95% CI, 0.60-0.63) in 2011 relative to the baseline year 1999.

Hypoglycemia Hospitalization Trends

There were a total of 429 850 hospitalizations for hypoglycemia contributed by 404 467 beneficiaries from 1999 to 2011. The overall observed rate of hospitalization for hypoglycemia increased by 11.7% (from 94 to 105 hospitalizations per 100 000 person-years) during this time period (**Figure 1A**, eTable 2 in the Supplement). Admissions for hypoglycemia increased until 2007 (to 130 per 100 000 person-years), and declined subsequently, but remained above the baseline (1999) levels. In analyses adjusted for age, race, and sex, the overall IRR for hypoglycemia was 1.11 (95% CI, 1.08-1.13) for 2011 relative to the baseline year 1999.

Mortality and Readmission Trends

Among beneficiaries admitted for hyperglycemia, observed 30-day mortality rates were 7.1% (95% CI, 6.8%-7.4%) in 1999 and 5.2% (95% CI, 4.9%-5.5%) in 2010, while 1-year mortality rates were 21.4% (95% CI, 21.0%-21.9%) in 1999 and 17.6% (95% CI,

Table 1. Characteristics of Patients Hospitalized for Hyperglycemia and Hypoglycemia, 1999 to 2011

Reason for Hospitalization	Year ^a						
	1999-2000	2001-2002	2003-2004	2005-2006	2007-2008	2009-2010	2011
Hyperglycemia							
Patients, No.	55 896	53 919	45 244	37 379	34 210	35 255	18 090 ^b
Demographics							
Age, mean (SD), y	77.2 (7.4)	77.0 (7.4)	76.7 (7.4)	76.4 (7.5)	76.3 (7.6)	76.2 (7.7)	76.0 (7.7)
Female	62.5	62.4	61.8	59.5	58.9	57.1	56.6
White	69.7	69.0	67.0	65.4	66.7	67.0	67.1
Black	22.7	22.7	23.9	25.3	24.5	24.7	24.7
Other	7.6	8.3	9.0	9.2	8.8	8.4	8.2
Comorbidities							
Congestive heart failure	19.6	20.5	20.8	19.5	18.4	17.9	17.5
Myocardial infarction	3.4	3.8	4.0	3.8	3.9	3.7	4.1
Unstable angina	4.0	3.8	3.3	3.0	2.4	2.1	2.0
Atherosclerosis	34.0	35.6	36.5	36.5	36.3	35.0	35.5
Respiratory failure	3.0	3.1	3.5	4.0	5.4	5.8	6.3
Hypertension	57.1	62.3	66.3	67.8	73.5	75.0	77.4
Stroke	3.5	3.6	3.4	2.9	2.8	2.7	2.6
Cerebrovascular disease	8.0	7.8	7.3	6.4	5.9	5.9	6.1
Renal failure	6.2	7.9	9.9	13.1	18.4	21.4	22.9
COPD	17.9	19.2	19.8	20.0	19.2	17.4	18.0
Pneumonia	11.7	12.6	12.8	12.3	12.8	12.8	13.0
Peripheral vascular disease	7.5	8.1	8.3	8.2	7.8	7.6	7.4
Cancer	10.0	10.2	10.0	9.9	9.8	9.5	9.0
Trauma	7.4	8.1	8.6	8.7	8.4	8.0	8.8
Psychiatric disease	4.6	4.9	5.0	4.9	5.6	5.9	6.2
Liver disease	1.8	1.9	2.0	2.0	2.1	2.1	2.4
Depression	7.3	8.7	9.5	9.4	10.0	10.0	10.8
Geriatric conditions							
Malnutrition	4.4	4.3	4.4	4.7	5.9	7.4	8.0
Dementia	18.2	19.0	20.1	19.7	20.3	20.9	20.3
Functional disability	4.5	4.7	4.7	4.1	3.9	4.7	4.5

(continued)

17.1%-18.2%) in 2010. Among patients admitted for hypoglycemia, the observed 30-day mortality rates were 5.0% (95% CI, 4.7%-5.2%) in 1999 and 5.0% (95% CI, 4.7%-5.2%) in 2010, while 1-year mortality rates were 23.3% (95% CI, 22.8%-23.9%) in 1999 and 22.6% (95% CI, 22.1%-23.0%) in 2010. Thirty-day readmission rates were 16.0% (95% CI, 15.5%-16.4%) in 1999 and 16.4% (95% CI, 15.8%-16.9%) in 2010 among patients admitted for hyperglycemia and 17.2% (95% CI, 16.8%-17.7%) in 1999 and 18.1% (95% CI, 17.6%-18.5%) in 2010 among patients admitted for hypoglycemia.

In risk-adjusted analyses, mortality and readmission outcomes after an index hospitalization for hyperglycemia and hypoglycemia improved during the study period. Adjusted ORs for 30-day and 1-year mortality in 2010 compared with baseline year 1999 were 0.75 (95% CI, 0.69-0.81) and 0.76 (95% CI, 0.72-0.80), respectively, among patients with hyperglycemia and 0.87 (95% CI, 0.81-0.95) and 0.82 (95% CI, 0.78-0.85), respectively, among patients with hypoglycemia. Adjusted ORs for 30-day readmission in 2010 compared with 1999 were 0.95 (95% CI, 0.90-1.00) and 0.93 (95% CI, 0.89-0.97) among ben-

eficiaries with hyperglycemia and hypoglycemia, respectively. Risk-adjusted outcomes are shown in Table 2. We found no statistically significant interactions in trends of 30-day mortality, 1-year mortality, and 30-day readmission rates among age, sex, and racial subgroups for the hyperglycemia condition. We found significant interactions by race and age for readmission among patients with hypoglycemia. The effects of these interactions were small (-0.0004 to 0.018).

Hospitalization Rates Stratified by Age, Sex, and Race

Hospitalization rates for both conditions were slightly higher among women than men (Figure 1B and C). Hospitalization rates for hypoglycemia were nearly 2-fold higher among older (≥ 75 years) vs younger (65-74 years) beneficiaries over the study period (Figure 1D-F). Finally, we observed clinically meaningful differences in admission rates for hyperglycemia and hypoglycemia by race over the entire study period (Figure 1G-I). Black patients had nearly 4-fold higher admission rates for hyperglycemia and hypoglycemia compared with white patients, and these differences persisted over time.

Table 1. Characteristics of Patients Hospitalized for Hyperglycemia and Hypoglycemia, 1999 to 2011 (continued)

Reason for Hospitalization	Year ^a						
	1999-2000	2001-2002	2003-2004	2005-2006	2007-2008	2009-2010	2011
Hypoglycemia							
Patients, No.	50 182	62 915	67 607	69 277	66 176	60 544	27 850 ^b
Demographics							
Age, mean (SD), y	78.0 (7.3)	77.9 (7.3)	77.8 (7.5)	77.9 (7.6)	78.1 (7.8)	78.1 (8.0)	78.0 (8.1)
Female	62.4	61.6	60.4	59.5	58.2	57.4	56.9
White	69.0	68.4	67.6	67.1	67.6	67.4	67.2
Black	23.4	23.4	23.4	23.3	22.8	23.1	23.5
Other	7.5	8.2	9.0	9.6	9.6	9.5	9.2
Comorbidities							
Congestive heart failure	26.9	27.3	28.1	28.4	27.8	28.0	27.8
Myocardial infarction	5.0	5.5	5.4	5.1	5.3	5.5	5.3
Unstable angina	5.0	4.5	4.1	3.5	3.0	2.9	2.6
Atherosclerosis	41.4	43.5	44.3	45.1	44.9	44.6	45.4
Respiratory failure	4.2	4.4	4.9	6.0	8.4	9.5	10.1
Hypertension	62.7	67.2	70.2	69.9	77.2	78.0	79.5
Stroke	4.8	4.4	4.1	3.8	3.8	3.8	3.5
Cerebrovascular disease	9.7	9.3	8.8	8.2	7.8	7.7	8.0
Renal failure	12.1	14.3	16.5	22.3	28.2	32.7	34.2
COPD	19.2	20.4	21.6	22.9	22.7	22.1	22.7
Pneumonia	12.7	13.2	13.8	14.8	16.2	18.1	18.3
Peripheral vascular disease	10.6	10.8	11.0	11.1	11.0	11.0	10.8
Cancer	10.9	10.8	10.8	10.5	10.9	11.3	11.1
Trauma	12.0	12.7	13.9	14.6	14.1	13.0	13.2
Psychiatric disease	4.4	4.3	4.4	4.2	4.6	5.2	5.3
Liver disease	1.8	1.9	1.9	1.9	2.0	2.0	2.3
Depression	7.9	8.9	10.0	9.7	10.0	9.9	10.9
Geriatric conditions							
Malnutrition	3.9	3.6	4.0	4.4	5.7	7.8	8.6
Dementia	16.6	18.1	19.1	20.0	21.2	22.7	22.0
Functional disability	5.8	5.7	5.3	4.9	5.2	5.7	5.6

Abbreviation: COPD, chronic obstructive pulmonary disorder.

^a Data are given as percentages except where noted.

^b Note that characteristics of patients are shown grouped in 2-year intervals for

ease of presentation, with data in the last column for year 2011 alone (thus, the number of patients is accordingly lower).

Trends in admission rates for hyperglycemia and hypoglycemia over time were qualitatively similar across all subgroups. However, we found statistically significant interactions in hospitalization rates for time and sex (both hyperglycemia and hypoglycemia), time and black race (hyperglycemia only), and time and age (both hyperglycemia and hypoglycemia). The effects of these interactions were small (0.009-0.027). *P* < .001 for all comparisons.

Additional Analyses

In analyses designed to account for trends in DM prevalence using BRFSS data, we found a decline in admission rates for both hyperglycemia and hypoglycemia hospitalizations. The estimated prevalence of DM among adults 65 years or older was 13.9% in 1999 and 18.8% in 2010. Estimated rates of admissions among Medicare beneficiaries with DM are shown in

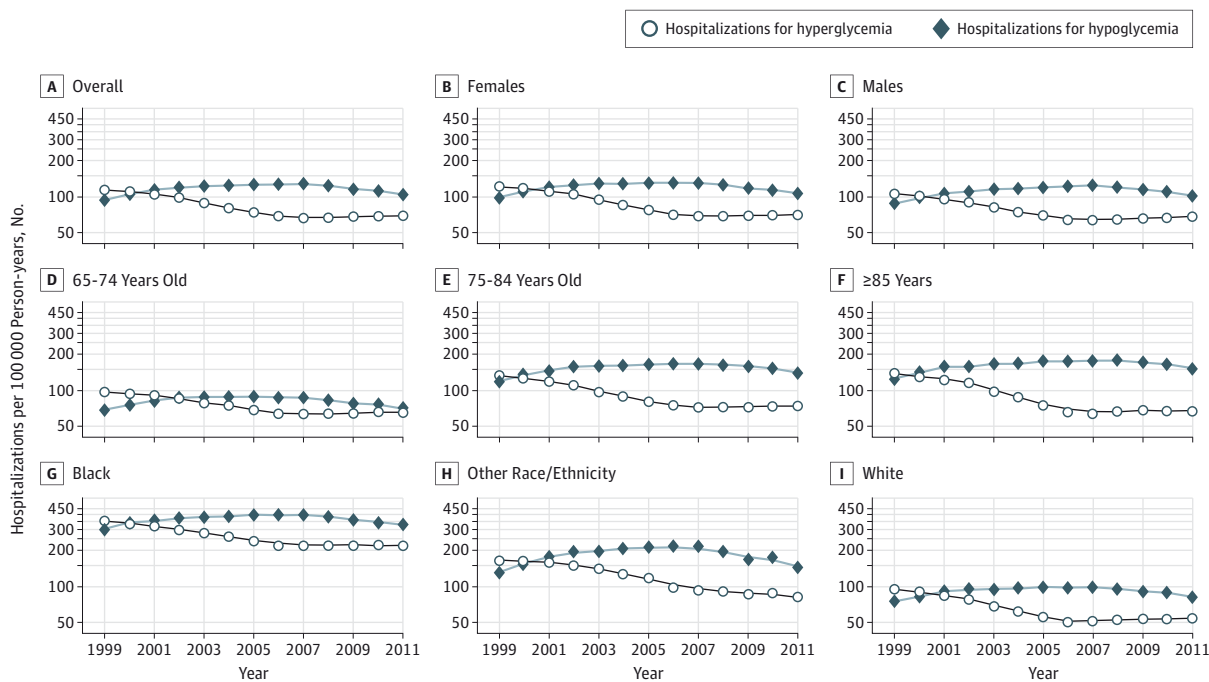
Figure 2. Admission rates for hyperglycemia and hypoglycemia decreased from 1999 to 2010 by 55.2% and 9.5%, respectively.

In analyses designed to account for changes in the use of hospital observation services, similar trends and patterns for hyperglycemia and hypoglycemia hospitalizations were observed when we restricted the outcome to hospitalizations with an LOS longer than 2 days compared with the primary analysis (eFigure A1 in the Supplement).

Discussion

Between 1999 and 2011, as glycemic control in the US population with DM improved,^{17,18} hyperglycemic events requiring hospital admission declined among older adults, but severe hy-

Figure 1. Observed Rates of Hospital Admissions for Hyperglycemia and Hypoglycemia, 1999 to 2011



A, Overall. B and C, Among females and males, respectively. Among age subgroups: D, 65- to 74-year-olds; E, 75- to 84-year-olds; F, those 85 years or older. Among racial subgroups: G, black; H, other race/ethnicity; I, white. Note:

To provide consistent axes for all relevant subgroups, the y-axis is on a logarithmic scale. The circles and diamonds indicate observed values; the lines represent the smoothed trend over time.

Table 2. Risk-Adjusted Outcomes After Hospitalization for Hyperglycemia and Hypoglycemia, 1999 to 2010^a

Reason for Hospitalization	Year											
	1999	2000	2001	2002	2003	2004	2005	2006	2007	2008	2009	2010 ^b
Hyperglycemia												
Beneficiaries, No.	28104	27782	27589	26319	23591	21643	19961	17409	16934	17268	17387	17860
30-d Mortality, %	7.1	7.0	7.2	7.2	7.4	6.8	6.3	5.8	5.9	5.7	5.3	5.4
1-y Mortality, %	21.4	21.4	21.6	20.9	20.7	19.7	18.3	18.3	17.9	17.5	17.1	17.1
30-d Readmission, %	16.0	15.7	16.0	15.6	15.7	16.1	16.3	15.9	15.6	15.9	15.7	15.3
Hypoglycemia												
Beneficiaries, No.	23630	26540	30548	32354	33575	34015	35056	34207	33732	32426	30341	30193
30-d Mortality, %	5.0	5.0	5.1	4.8	4.7	4.3	4.3	3.8	4.1	4.6	4.4	4.4
1-y Mortality, %	23.3	22.9	23.3	21.7	21.3	19.9	19.4	18.4	19.4	19.8	20.5	19.9
30-d Readmission, %	17.3	17.9	17.4	17.2	16.7	16.7	16.4	16.0	16.1	16.3	16.3	16.3

^a Outcomes were risk-adjusted for demographics and all comorbidities and geriatric conditions presented in Table 1.

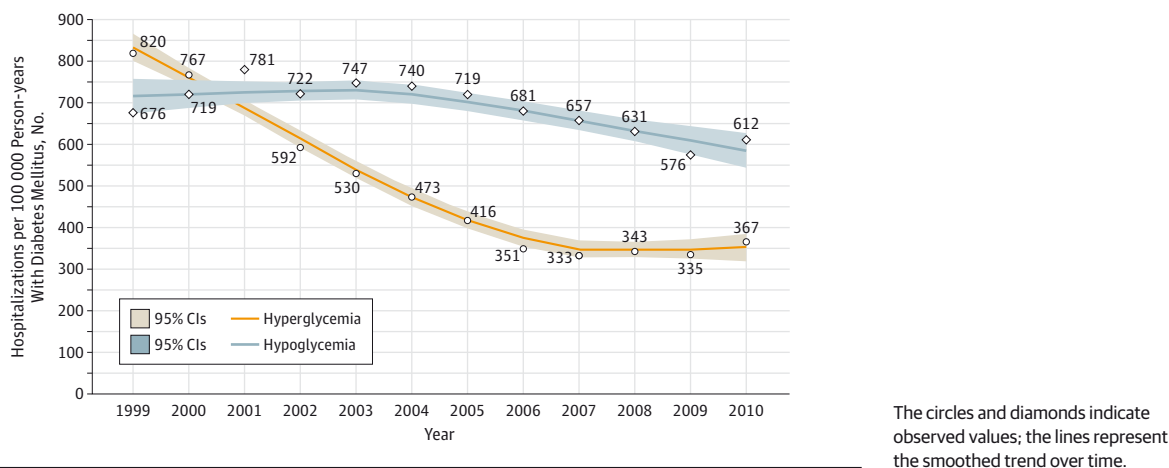
^b Data for mortality and readmissions were not available for hospitalizations in 2011 because we did not have access to follow-up data in 2012.

poglycemic events requiring hospitalization increased. Black patients experienced much higher rates of hospitalizations for both hyperglycemia and hypoglycemia compared with white patients throughout the 12-year period, while adults 75 years or older had higher rates of hypoglycemia leading to admission than those 65 to 74 years old. Estimated rates of admissions among older adults with DM using additional data from the BRFSS showed an even more dramatic decline in hyperglycemia hospitalizations but also a slight decrease in hypoglycemia hospitalizations over time. These results show considerable progress in reduction of admissions for

hyperglycemia that has not been matched by similar advances in prevention of admissions for hypoglycemia.

Our study based on hospital admissions for short-term complications of DM suggests a differential effect of changes in DM treatment on rates of severe hyperglycemia and hypoglycemia and provides a strong argument for incorporating hypoglycemia into future assessments of DM quality measures. Over the past decade, DM care quality metrics have primarily rewarded target-based lowering of glucose levels^{14,15,17} based on evidence that persistent hyperglycemia, as assessed by elevated HbA_{1c} level, is associated with the development and pro-

Figure 2. Rates of Estimated Hospital Admissions for Hyperglycemia and Hypoglycemia Among Medicare Beneficiaries With Diabetes Mellitus, 1999 to 2010



gression of diabetic complications.^{31,32} This approach provides incentives for aggressive control of glucose levels but may obscure harms associated with treatment. Indeed, using nationally representative snapshots of risk-factor control between 1999 and 2010, a recent study evaluated DM care based on individualized performance measures and concluded that preventive practices and glycemic control have improved during the study period.^{17,18} In particular, the proportion of the population with DM meeting HbA_{1c} target levels lower than 7% and lower than 8% increased from 1999 to 2002 and from 2003 to 2006, although it did not change significantly in the subsequent 2007-2010 period. Our data suggest that these improvements in glucose control were accompanied by a marked reduction in hyperglycemia among beneficiaries with DM, but a substantially smaller decline in hypoglycemia, a recognized harm associated with treatment.

The modest decline in hospital admissions for hypoglycemia after 2007 coincides with the well-publicized results from 3 large cardiovascular trials,⁹⁻¹¹ published in 2008, each of which demonstrated no significant benefit on macrovascular outcomes from more intensive glycemic control. The ACCORD trial was terminated prematurely in early 2008 because of an unexpected increase in all-cause mortality in those patients assigned to the more aggressive strategy.⁹ These results led to a call for more moderated approaches to lowering of glucose levels by professional groups.³³ The trends in our study may at least partly reflect overall secular trends in the intensity of glycemic control in older patients with type 2 DM subsequent to these trials. However, other changes in the treatment of patients with DM could have contributed as well, including greater use of medications that do not typically lead to hypoglycemia.³⁴

We found significant age and racial differences in rates of hospital admissions for hyperglycemia and hypoglycemia. Consistent with prior studies,^{23,35} admission rates for hypoglycemia were twice as high among older patients (≥75 years old) compared with younger patients (65-74 years old). A recent study based on National Electronic Injury Surveillance System project estimated an annual rate of emergency depart-

ment visits for insulin-related hypoglycemia and errors to be 20.5 and 34.9 per 1000 insulin-treated patients with DM 65 years old and 80 years or older, respectively.³⁵ These rate estimates are not directly comparable with ours because both the outcome and the denominator differ. Nevertheless, they confirm much higher rates of severe hypoglycemia among the oldest patients. Meal-planning misadventures and insulin product mix-ups were identified as potential reasons for these events.³⁵ In addition, older patients may be more susceptible to hypoglycemia and its adverse consequences¹⁻³ owing to aging-related changes in renal function, drug clearance, counter-regulatory responses, as well as cognitive dysfunction and highly prevalent polypharmacy.³⁶ In our study, admission rates for hyperglycemia and hypoglycemia were 4 times as high among black patients compared with white patients. Although DM disproportionately affects blacks, differences in the prevalence of DM would be expected to, at most, double these admissions.³⁷ Prior studies have shown higher HbA_{1c} levels among black patients compared with white patients,^{20,38,39} with a reduction in these differences after age 65 years when Medicare coverage becomes available.¹⁹ Higher HbA_{1c} levels may be associated with uncontrolled or untreated DM and explain more frequent admissions for hyperglycemia among blacks.⁴⁰ However, black patients also have higher rates of emergency department visits for hypoglycemia compared with white patients with DM.²² It is, therefore, possible that strategies focused primarily on intensifying glycemic control among black patients may potentially exacerbate disparities in hypoglycemia.

The short- and long-term mortality and readmission rates after hospitalization were similar for hyperglycemia and hypoglycemia, and both declined significantly over time. Improved monitoring, treatment, and coordination of care either during or after hospitalization may have contributed to these trends, or they may simply reflect secular trends in improved DM outcomes over time.⁴¹ Patients hospitalized for hypoglycemic events had a higher comorbidity burden compared with patients hospitalized for hyperglycemia. However, outcomes after hospital admission for either metabolic complication were

comparable, suggesting similar consequences (or vulnerabilities) for subsequent mortality and readmission. Although some hypoglycemic events may be minor and easily reversible, we focused on serious events that were thought to be chiefly responsible for hospital admission, and these seem to have important implications for subsequent outcomes.

To our knowledge, prior studies have not evaluated national trends in both hyperglycemic and hypoglycemic complications of DM.^{22,42} However, our analyses have several limitations. We were unable to fully account for trends in DM prevalence over time or explicitly define the denominator of patients with DM using inpatient CMS data, but our intent was to describe the overall burden of these hospitalizations on patients and the health care system. To assess the effect of changes in DM prevalence on rates of hospital admissions over time, we created synthetic denominators based on DM prevalence estimates from the BRFSS to complement our analyses. Our findings consistently showed a reversal in admission rates for hyperglycemia and hypoglycemia over time, but rates for hypoglycemia slightly declined when accounting for DM prevalence. We could not account for observation stays, changes in observation stay rates over time, or changes in thresholds to admit patients with hyperglycemia or hypoglycemia, but we performed additional analyses, the results of which suggest that

our overall trends were similar in those with shorter and longer admissions. We were not able to capture emergency department visits and ambulance calls for hypoglycemia that did not lead to hospital admission, but we did include events that are associated with highest cost and morbidity. In addition, we did not have information on patients' laboratory data, including HbA_{1c} levels, or their drug therapy. Because our data included Medicare FFS patients, our results may not be generalizable to those enrolled in Medicare Advantage.

Conclusions

Hospital admission rates for hyperglycemia dramatically declined from 1999 to 2011 and are now surpassed by hospitalizations for hypoglycemia among older Medicare beneficiaries. Although admission rates for hypoglycemia have declined modestly since 2007, efforts to further reduce these hospitalizations, especially among black and older adults, are urgently needed. Evaluations of DM care quality based on achieved glycemic targets do not account for adverse consequences of treatment, such as hypoglycemia. Studies that consider these important patient outcomes will provide a more comprehensive assessment of the overall quality of DM treatment.

ARTICLE INFORMATION

Accepted for Publication: April 1, 2014.

Published Online: May 17, 2014.

doi:10.1001/jamainternmed.2014.1824.

Author Affiliations: Section of Endocrinology, Yale School of Medicine, New Haven, Connecticut (Lipska, Inzucchi); Section of General Internal Medicine and Robert Wood Johnson Clinical Scholars Program, Department of Internal Medicine, Yale School of Medicine, New Haven, Connecticut (Ross); Center for Outcomes Research and Evaluation, Yale–New Haven Hospital, New Haven, Connecticut (Ross, Wang, Minges); Department of Biostatistics, Harvard School of Public Health, Boston, Massachusetts (Wang); Division of Research, Kaiser Permanente Northern California, Oakland (Karter); Section of General Internal Medicine, University of Chicago, Chicago, Illinois (Huang); Yale School of Public Health and Robert Wood Johnson Clinical Scholars Program, Department of Internal Medicine, Yale School of Medicine, New Haven, Connecticut (Desai); Section of Geriatrics, Department of Internal Medicine, Yale School of Medicine, New Haven, Connecticut (Gill); Section of Cardiovascular Medicine, Robert Wood Johnson Clinical Scholars Program, Department of Internal Medicine, Yale School of Medicine, New Haven, Connecticut (Krumholz); Center for Outcomes Research and Evaluation, Yale–New Haven Hospital and Section of Health Policy and Administrations, Yale School of Public Health, New Haven, Connecticut (Krumholz).

Author Contributions: Dr Wang had full access to all the data in the study and takes responsibility for the integrity of the data and the accuracy of the data analysis.

Study concept and design: Lipska, Minges, Huang, Gill, Krumholz.

Acquisition, analysis, or interpretation of data: Lipska, Ross, Wang, Inzucchi, Minges, Karter, Desai.

Drafting of the manuscript: Lipska.

Critical revision of the manuscript for important intellectual content: All authors.

Statistical analysis: Wang, Karter, Desai.

Obtained funding: Krumholz

Administrative, technical, or material support: Minges.

Study supervision: Inzucchi, Huang, Gill.

Conflict of Interest Disclosures: Dr Ross is a member of a scientific advisory board for FAIR Health. Drs Ross and Krumholz are recipients of a research grant from Medtronic through Yale University. Drs Wang and Krumholz receive contract funding from CMS to develop and maintain quality measures. Dr Inzucchi has served as an advisor to Merck, Boehringer Ingelheim, BMS, Janssen, and Novo-Nordisk. Dr Krumholz chairs a cardiac scientific advisory board for UnitedHealth. No other disclosures are reported.

Funding/Support: Dr Lipska was supported by a training grant T32AG1934 from the National Institute on Aging and is currently supported by the Pepper Center Career Development Award (P30 AG21342), a grant for Early Medical/Surgical Specialists' Transition to Aging Research (RO3 AGO45086) from the National Institute on Aging, and the Yale Center for Investigation Scholar Award. This study was made possible by the National Institutes of Health (NIH) Clinical and Transitional Science Awards grant No. UL1 TR000142 from the National Center for Advancing Translational Science (NCATS), a component of the NIH. Dr Ross is supported by grant No. K08 AG032886-05 from the National Institute on Aging and by the American Federation for Aging Research through the Paul B. Beeson Career Development Award Program. Mr Minges is supported by a training grant T32DK097718 from the National Institute of Diabetes, Digestive and Kidney Diseases. Drs Karter and Huang are funded by the National Institute of

Diabetes, Digestive and Kidney Diseases (grant No. R01 DK081796 [Drs Karter and Huang], R01 DK65664 and P30 DK092924 [Dr Karter] and P30 DK092949 [Dr Huang]). Dr Gill is supported by an Academic Leadership Award (K07AGO43587) from the National Institute on Aging. Dr Krumholz is supported by grant No. U01 HL105270 (Center for Cardiovascular Outcomes Research at Yale University) from the National Heart, Lung, and Blood Institute.

Role of the Sponsor: The funding sources had no role in the design and conduct of the study; collection, management, analysis, and interpretation of the data; preparation, review, or approval of the manuscript; and decision to submit the manuscript for publication.

Disclaimer: The contents of this article are solely the responsibility of the authors and do not necessarily represent the official view of the NIH.

Previous Presentations: The abstract based on this work was an oral presentation at the American Diabetes Association Scientific Sessions; June 24, 2013; Chicago, Illinois; and at the American Geriatrics Society 2014 Annual Meeting; May 17, 2014; Orlando, Florida.

REFERENCES

- Johnston SS, Conner C, Aagren M, Smith DM, Bouchard J, Brett J. Evidence linking hypoglycemic events to an increased risk of acute cardiovascular events in patients with type 2 diabetes. *Diabetes Care*. 2011;34(5):1164-1170.
- Johnston SS, Conner C, Aagren M, Ruiz K, Bouchard J. Association between hypoglycaemic events and fall-related fractures in Medicare-covered patients with type 2 diabetes. *Diabetes Obes Metab*. 2012;14(7):634-643.
- Whitmer RA, Karter AJ, Yaffe K, Quesenberry CP Jr, Selby JV. Hypoglycemic episodes and risk of

- dementia in older patients with type 2 diabetes mellitus. *JAMA*. 2009;301(15):1565-1572.
4. Yaffe K, Falvey CM, Hamilton N, et al; Health ABC Study. Association between hypoglycemia and dementia in a biracial cohort of older adults with diabetes mellitus. *JAMA Intern Med*. 2013;173(14):1300-1306.
 5. Zoungas S, Patel A, Chalmers J, et al; ADVANCE Collaborative Group. Severe hypoglycemia and risks of vascular events and death. *N Engl J Med*. 2010;363(15):1410-1418.
 6. Bonds DE, Miller ME, Bergenstal RM, et al. The association between symptomatic, severe hypoglycaemia and mortality in type 2 diabetes: retrospective epidemiological analysis of the ACCORD study. *BMJ*. 2010;340:b4909.
 7. Hsu PF, Sung SH, Cheng HM, et al. Association of clinical symptomatic hypoglycemia with cardiovascular events and total mortality in type 2 diabetes mellitus: a nationwide population-based study. *Diabetes Care*. In press.
 8. McCoy RG, Van Houten HK, Ziegenfuss JY, Shah ND, Wermers RA, Smith SA. Increased mortality of patients with diabetes reporting severe hypoglycemia. *Diabetes Care*. 2012;35(9):1897-1901.
 9. Gerstein HC, Miller ME, Byington RP, et al; Action to Control Cardiovascular Risk in Diabetes Study Group. Effects of intensive glucose lowering in type 2 diabetes. *N Engl J Med*. 2008;358(24):2545-2559.
 10. Patel A, MacMahon S, Chalmers J, et al; ADVANCE Collaborative Group. Intensive blood glucose control and vascular outcomes in patients with type 2 diabetes. *N Engl J Med*. 2008;358(24):2560-2572.
 11. Duckworth W, Abraira C, Moritz T, et al; VADT Investigators. Glucose control and vascular complications in veterans with type 2 diabetes. *N Engl J Med*. 2009;360(2):129-139.
 12. Greenfield S, Billimek J, Pellegrini F, et al. Comorbidity affects the relationship between glycemic control and cardiovascular outcomes in diabetes: a cohort study. *Ann Intern Med*. 2009;151(12):854-860.
 13. Miller ME, Bonds DE, Gerstein HC, et al; ACCORD Investigators. The effects of baseline characteristics, glycaemia treatment approach, and glycated haemoglobin concentration on the risk of severe hypoglycaemia: post hoc epidemiological analysis of the ACCORD study. *BMJ*. 2010;340:b5444.
 14. Ahmann AJ. Guidelines and performance measures for diabetes. *Am J Manag Care*. 2007;13(suppl 2):S41-S46.
 15. Pogach L, Aron DC. Sudden acceleration of diabetes quality measures. *JAMA*. 2011;305(7):709-710.
 16. O'Kane ME, Pawlson G. Diabetes quality measures. *JAMA*. 2011;305(19):1966-1967.
 17. Ali MK, Bullard KM, Saaddine JB, Cowie CC, Imperatore G, Gregg EW. Achievement of goals in US diabetes care, 1999-2010. *N Engl J Med*. 2013;368(17):1613-1624.
 18. Stark Casagrande S, Fradkin JE, Saydah SH, Rust KF, Cowie CC. The prevalence of meeting A1C, blood pressure, and LDL goals among people with diabetes, 1988-2010. *Diabetes Care*. 2013;36(8):2271-2279.
 19. McWilliams JM, Meara E, Zaslavsky AM, Ayanian JZ. Differences in control of cardiovascular disease and diabetes by race, ethnicity, and education: US trends from 1999 to 2006 and effects of Medicare coverage. *Ann Intern Med*. 2009;150(8):505-515.
 20. Egede LE, Gebregziabher M, Hunt KJ, et al. Regional, geographic, and racial/ethnic variation in glycemic control in a national sample of veterans with diabetes. *Diabetes Care*. 2011;34(4):938-943.
 21. Gouni-Berthold I, Berthold HK, Mantzoros CS, Böhm M, Krone W. Sex disparities in the treatment and control of cardiovascular risk factors in type 2 diabetes. *Diabetes Care*. 2008;31(7):1389-1391.
 22. Ginde AA, Espinola JA, Camargo CA Jr. Trends and disparities in US emergency department visits for hypoglycemia, 1993-2005. *Diabetes Care*. 2008;31(3):511-513.
 23. Zammitt NN, Frier BM. Hypoglycemia in type 2 diabetes: pathophysiology, frequency, and effects of different treatment modalities. *Diabetes Care*. 2005;28(12):2948-2961.
 24. Malone ML, Gennis V, Goodwin JS. Characteristics of diabetic ketoacidosis in older versus younger adults. *J Am Geriatr Soc*. 1992;40(11):1100-1104.
 25. Ginde AA, Blanc PG, Lieberman RM, Camargo CA Jr. Validation of ICD-9-CM coding algorithm for improved identification of hypoglycemia visits. *BMC Endocr Disord*. 2008;8:4.
 26. Krumholz HM, Wang Y, Mattera JA, et al. An administrative claims model suitable for profiling hospital performance based on 30-day mortality rates among patients with an acute myocardial infarction. *Circulation*. 2006;113(13):1683-1692.
 27. Krumholz HM, Wang Y, Mattera JA, et al. An administrative claims model suitable for profiling hospital performance based on 30-day mortality rates among patients with heart failure. *Circulation*. 2006;113(13):1693-1701.
 28. Bratzler DW, Normand SL, Wang Y, et al. An administrative claims model for profiling hospital 30-day mortality rates for pneumonia patients. *PLoS One*. 2011;6(4):e17401.
 29. Zhang J, Yu KF. What's the relative risk? a method of correcting the odds ratio in cohort studies of common outcomes. *JAMA*. 1998;280(19):1690-1691.
 30. Feng Z, Wright B, Mor V. Sharp rise in Medicare enrollees being held in hospitals for observation raises concerns about causes and consequences. *Health Aff (Millwood)*. 2012;31(6):1251-1259.
 31. Stratton IM, Adler AI, Neil HA, et al. Association of glycaemia with macrovascular and microvascular complications of type 2 diabetes (UKPDS 35): prospective observational study. *BMJ*. 2000;321(7258):405-412.
 32. Huang ES, Liu JY, Moffet HH, John PM, Karter AJ. Glycemic control, complications, and death in older diabetic patients: the diabetes and aging study. *Diabetes Care*. 2011;34(6):1329-1336.
 33. American Diabetes Association. Standards of medical care in diabetes, 2009. *Diabetes Care*. 2009;32(suppl 1):S13-S61.
 34. Alexander GC, Sehgal NL, Moloney RM, Stafford RS. National trends in treatment of type 2 diabetes mellitus, 1994-2007. *Arch Intern Med*. 2008;168(19):2088-2094.
 35. Geller AI, Shehab N, Lovegrove MC, et al. National estimates of insulin-related hypoglycemia and errors leading to emergency department visits and hospitalizations. *JAMA Intern Med*. 2014.
 36. Kirkman MS, Briscoe VJ, Clark N, et al. Diabetes in older adults. *Diabetes Care*. 2012;35(12):2650-2664.
 37. Cowie CC, Rust KF, Ford ES, et al. Full accounting of diabetes and pre-diabetes in the US population in 1988-1994 and 2005-2006. *Diabetes Care*. 2009;32(2):287-294.
 38. Wisdom K, Fryzek JP, Havstad SL, Anderson RM, Dreiling MC, Tilley BC. Comparison of laboratory test frequency and test results between African-Americans and Caucasians with diabetes: opportunity for improvement: findings from a large urban health maintenance organization. *Diabetes Care*. 1997;20(6):971-977.
 39. Herman WH, Dungan KM, Wolfenbutter BH, et al. Racial and ethnic differences in mean plasma glucose, hemoglobin A_{1c}, and 1,5-anhydroglucitol in over 2000 patients with type 2 diabetes. *J Clin Endocrinol Metab*. 2009;94(5):1689-1694.
 40. Umpierrez GE, Kelly JP, Navarrete JE, Casals MM, Kitabchi AE. Hyperglycemic crises in urban blacks. *Arch Intern Med*. 1997;157(6):669-675.
 41. Gregg EW, Cheng YJ, Saydah S, et al. Trends in death rates among US adults with and without diabetes between 1997 and 2006: findings from the National Health Interview Survey. *Diabetes Care*. 2012;35(6):1252-1257.
 42. Wang J, Imai K, Engelgau MM, Geiss LS, Wen C, Zhang P. Secular trends in diabetes-related preventable hospitalizations in the United States, 1998-2006. *Diabetes Care*. 2009;32(7):1213-1217.